



S36

SPEED SENSOR



This sensor is used for scanning of speed and position of rotating target wheel or mark from soft magnetic material. This sensor resolves the position of target wheel after supply voltage ON and at zero speed (TPO). The sensor is suitable for cam application.

Der Geber ist für die Drehzahlabtastung des ferromagnetischen Geberrads von der Nockenwelle bestimmt. Es handelt sich um den TPO Geber mit Hall - IC. Er ist passend für die Drehzahlabtastung von der Nockenwelle.

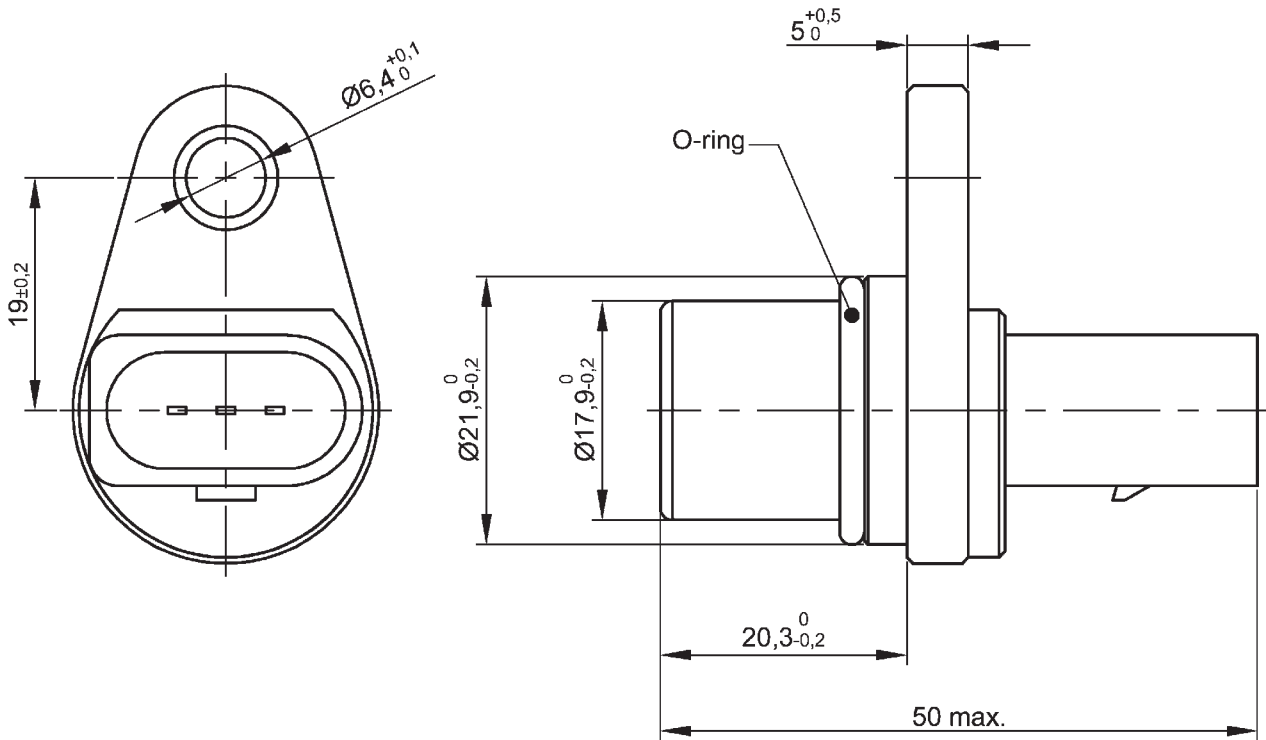
Snímač je určen pro snímání otáček feromagnetického kola vačkového hřídele. Jedná se o TPO snímač s Hallovým senzorem. Je vhodný pro snímání otáček vačkového hřídele.

S36

SPEED SENSOR



Dimensions



Basic technical data

| | |
|---------------------------------------|---|
| Working air gap > | from 0,55 mm to 0,95 mm |
| Working temperature > | from -40°C to $+150^{\circ}\text{C}$ |
| Speed range > | from 0 rpm to 4000 rpm |
| Supply voltage > | from 4,5 to 5,75 V_{DC} typical (range 3,8-24 V_{DC}) |
| Phase delay (rising / falling edge) > | $-3^{\circ} \pm 2^{\circ}$ / $+7^{\circ} \pm 2^{\circ}$ |
| Rising / falling edge time > | max. 25 μs / max. 1 μs |
| Output signal > | $U_{\text{low}} = \text{max. } 0,5 V_{\text{DC}}$ $U_{\text{high}} = \text{min. } 0,9 U_{\text{CC}}$ |
| Supply current | max. 3,8 mA |
| Open collector current > | max. 20 mA |
| Power on time > | max. 50 ms |
| Mounting > | with fixing screw M6 |
| Connector > | 3 pins connector VW 1J0 900 962 |

v 01